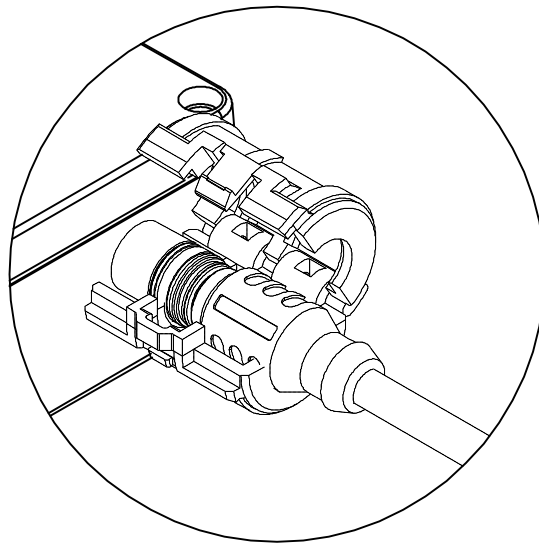


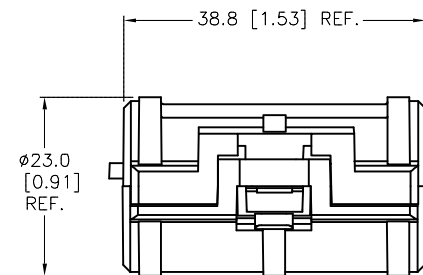
SPECIFICATIONS

HOUSING MATERIAL/COLOR

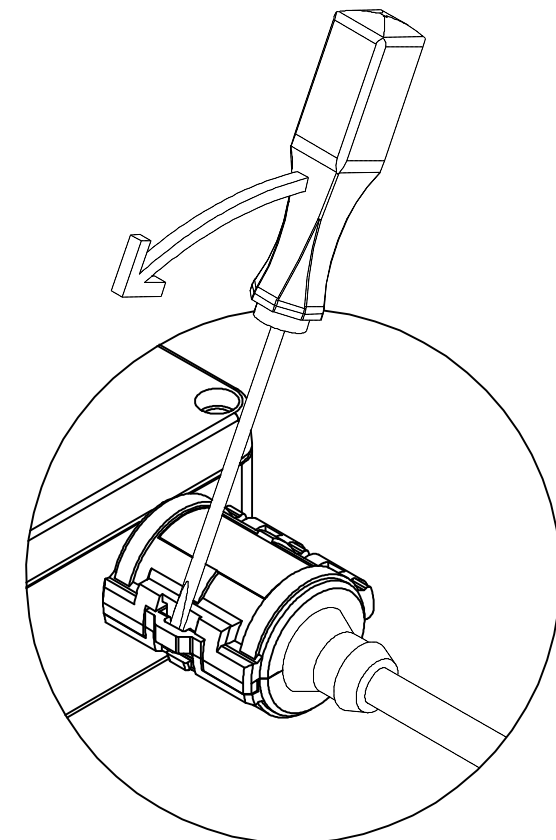
NYLON 66/BLACK



TO INSTALL LOCKOUT DEVICE, PLACE AROUND CORDSET END AND CLOSE UNTIL CONNECTOR SNAPS CLOSED. REFERENCE DIAGRAM OF CONNECTOR.

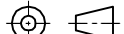


LOCKOUT DEVICE FITS ALL STRAIGHT TURCK EUROFAST CONNECTORS. (RKC, RSC, RKS, RSS, RKSW, RSSW)



TO REMOVE LOCKOUT DEVICE, INSERT SMALL SCREWDRIVER INTO LOCKING GROOVE AS SHOWN IN PICTURE. ROTATE SCREWDRIVER IN DIRECTION SHOWN UNTIL LOCKING DEVICE RELEASES.

SOURCE DRAWING - FOR REFERENCE ONLY

RELATED DOCUMENTS		3RD ANGLE PROJECTION		<p>THIS DRAWING IS CONFIDENTIAL AND THE PROPERTY OF TURCK INC. USE OF THIS DOCUMENT WITHOUT WRITTEN PERMISSION IS PROHIBITED.</p>	<p>TURCK INC</p> <p><i>High Technology Sensors and Automation Controls</i></p>	<p>3000 CAMPUS DRIVE MINNEAPOLIS, MN 55441 1-800-544-7769 (763) 553-7300 (763) 553-0708 fax turck.com</p>		
1. 9-RDV-166 2. 3. 4.								
MATERIAL		ALL DIMENSIONS DISPLAYED ON THIS DRAWING ARE FOR REFERENCE ONLY	DRFT RDS		DATE 12/29/04		LOCK-EURO-C	
			APVD		SCALE 1=1.0			
FINISH			UNIT OF MEASUREMENT		MILLIMETERS		IDENTIFICATION NO.	
							A0885	
		CONTACT TURCK FOR MORE INFORMATION	DO NOT SCALE THIS DRAWING		FILE: A0885		REV	
B							B	
REV								
							SHEET 1 OF 1	